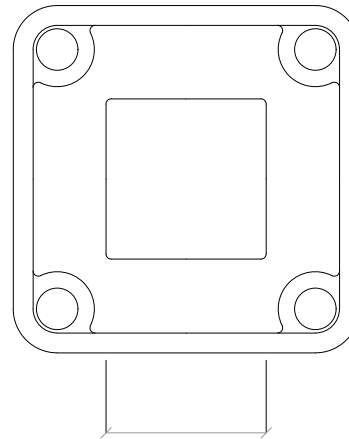
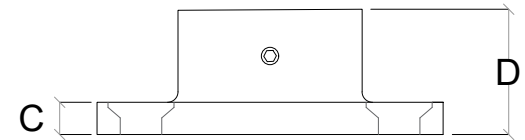


A



B



C

D

Use with:	Part # Satin:	Part # Mirror:	A	B	C	D
X	1FS2033S-04S	1FS2033S-04M	$3 \frac{5}{16} "$ [84.6mm]	$1 \frac{9}{16} "$ [39.1mm]	$\frac{5}{16} "$ [7.9mm]	$1 \frac{3}{16} "$ [30.5mm]
X	1FS2033T-04S	1FS2033T-04M	$3 \frac{15}{16} "$ [99.5mm]	$1 \frac{3}{4} "$ [43.8mm]	$\frac{5}{16} "$ [7.9mm]	$1 \frac{1}{4} "$ [31.7mm]

Material: 316 Stainless Steel  
 Finish: Satin/Mirror  
 Weight: .5 to .7lbs per cap  
 Note: 1FS2033T contains one cap per box  
 1FS2033S contains two caps per box

Copyright © 2017 Luna Architectural Products, LLC

**LUNAAPRO**

418 Route 206  
 Montague, New Jersey 07827

web: [www.lunaapro.com](http://www.lunaapro.com)  
 email: [sales@lunaapro.com](mailto:sales@lunaapro.com)

Tel: 973-552-9492

DRAWING TITLE :  
 1FS2033  
 Base Flange

DATE : 11/15/2018

DRN. BY: JPG

SCALE: N.T.S.

DRAW. NO:

1/1